

**How does the LTBMU monitor if  
management objectives are met  
with current burn pile practices in  
Aspen?**

**SHANA GROSS, ECOLOGIST**

**KYLE JACOBSON, FUELS SPECIALIST**

**October 28, 2014**

# Monitoring Questions



- What effect does pile burning have on Aspen stands?
- Does pile burning act as a surrogate for natural fire or is it just a method to remove thinned material?
- How are slope, density, size of burn piles, fuel characteristics correlated with:
  - Understory vegetation community response, including seedling regeneration and invasive species;
  - What effect does pile burning have on erosion and soil reddening;
  - How does pile burning affect overstory mortality?

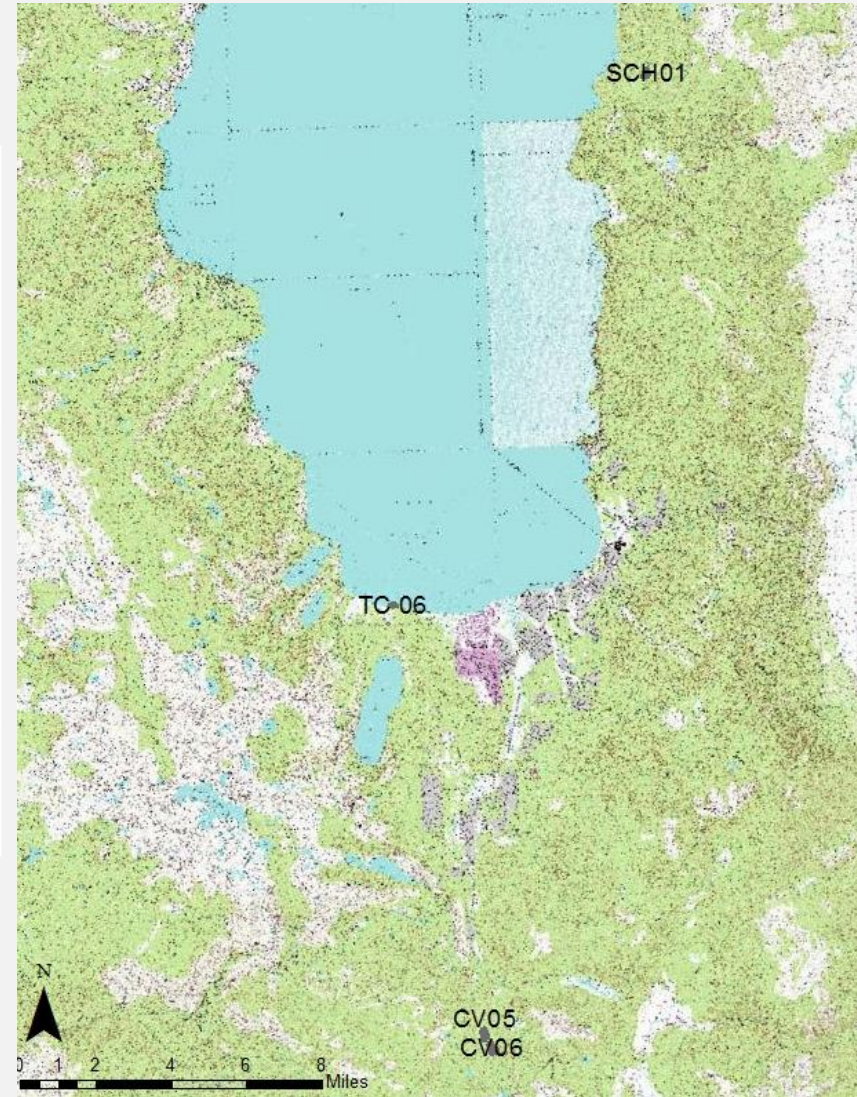
# Plot Layout

- 3-5 plots per project
- 8 m (26.2 ft) radius plots (=200 square meter/ 1/20 acre)
- Four 8 m (26.2 ft) transects N, E, S, and W.



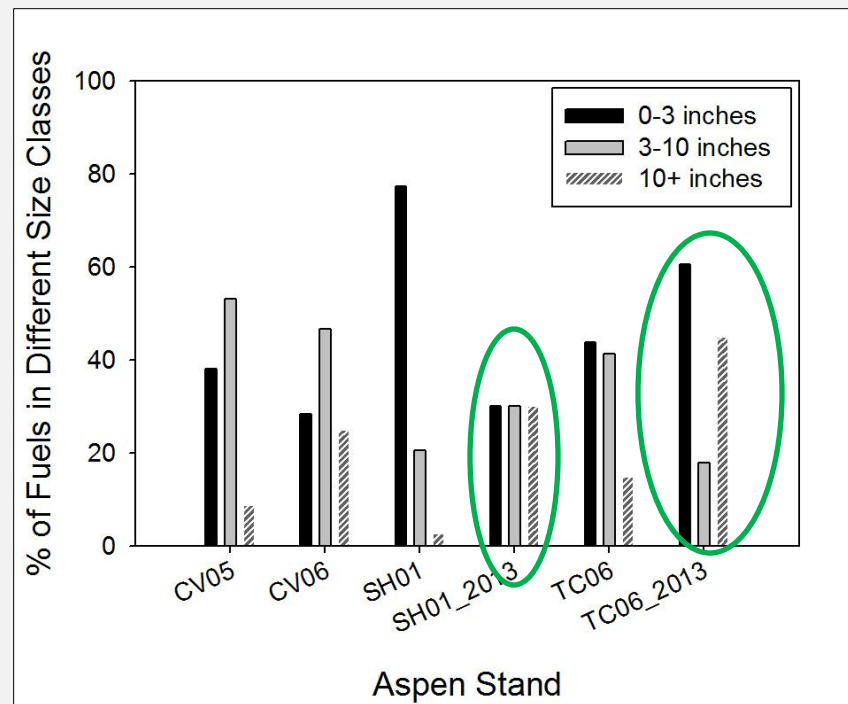
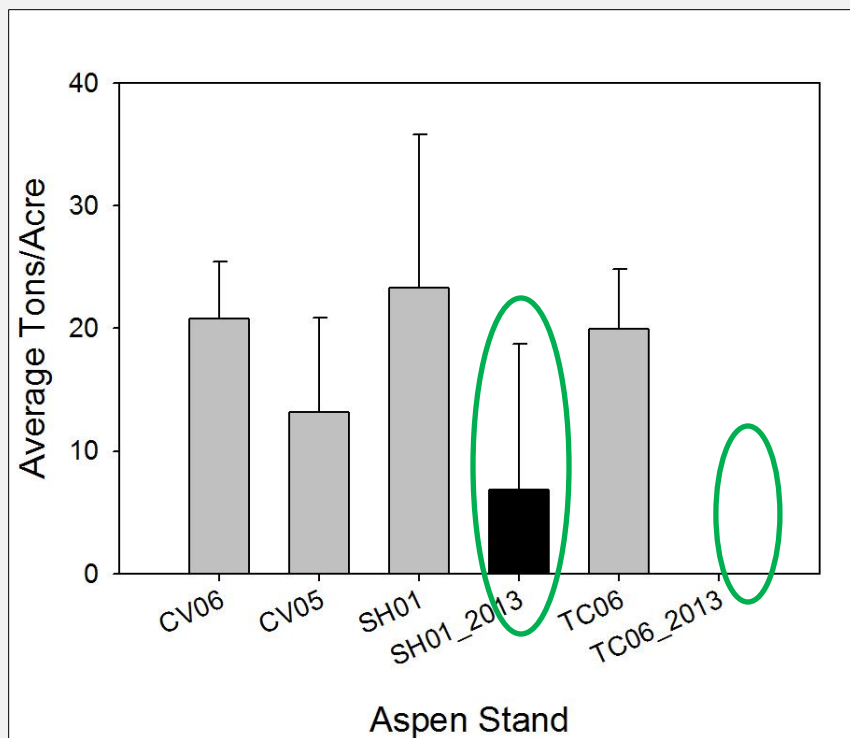
# Monitoring Schedule

Aspen Unit	Pre-burn/ post pile	Year Burned	1 year post	3 years post	5 years post
CV05	2012				
CV06	2012				
SH01	2012	12_ 2012	2013	2015	2017
TC06	2012	11_ 2012	2013	2015	2017

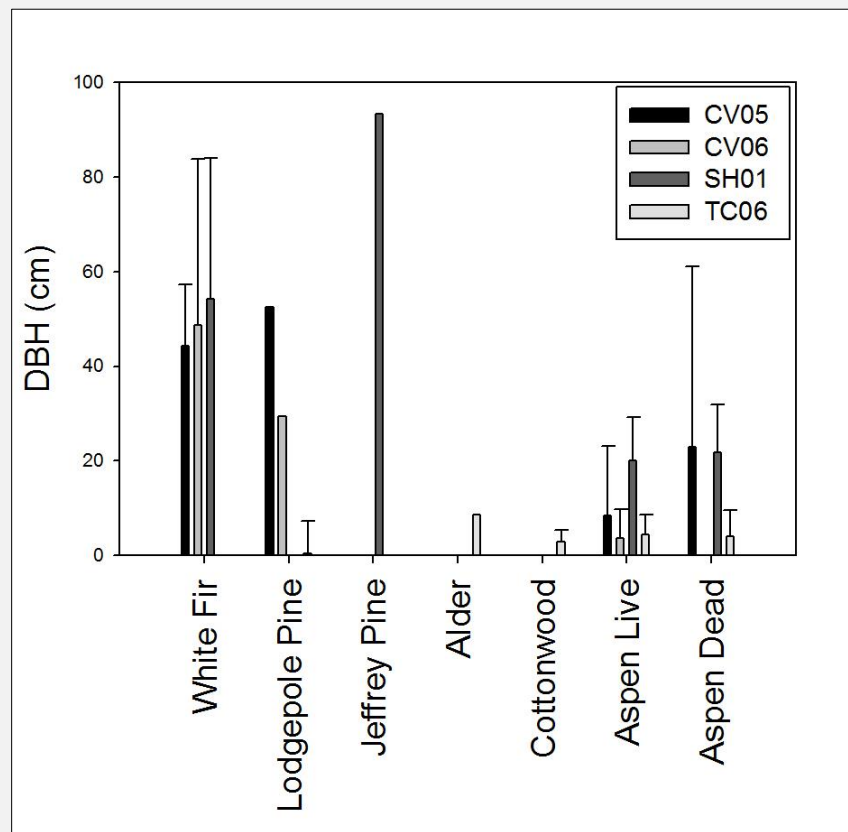
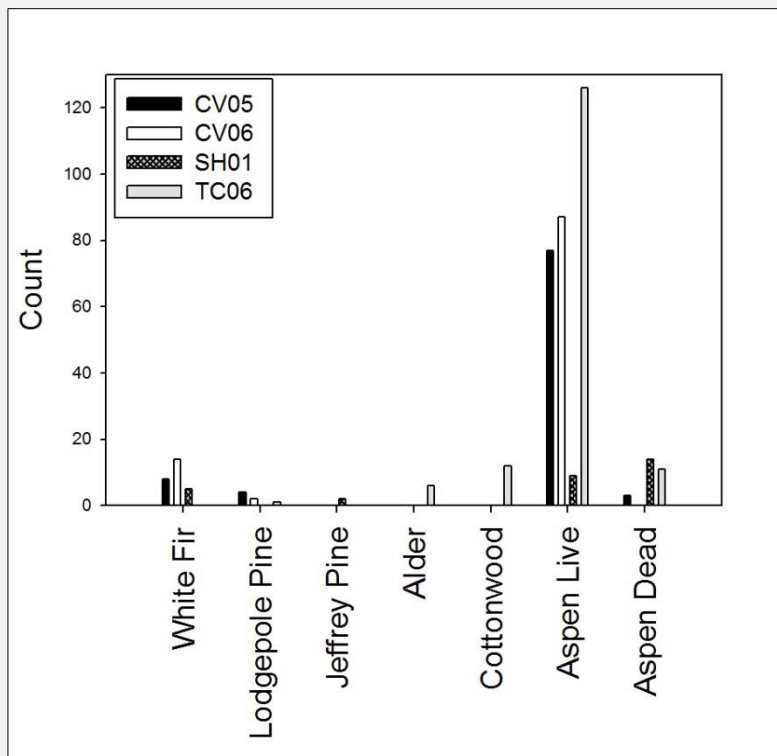




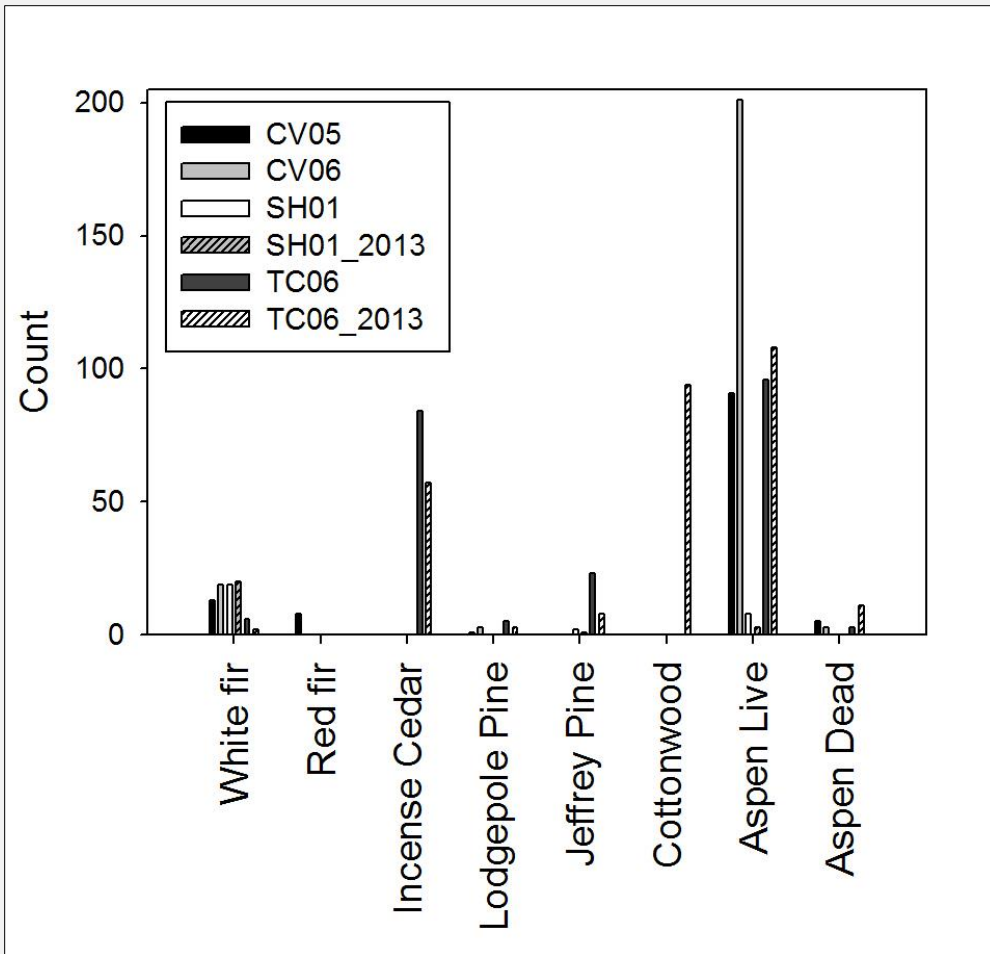
## Burn Pile Inventory



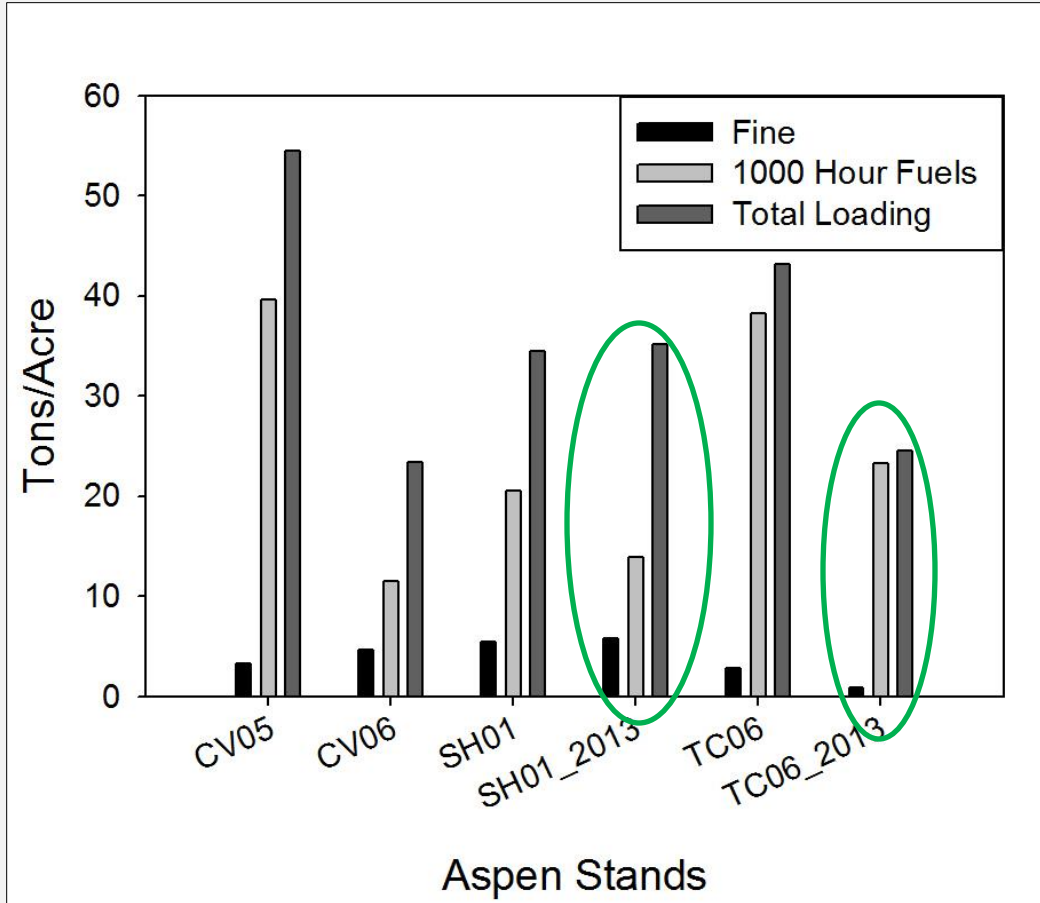
# Overstory



# Seedlings/Sprouts

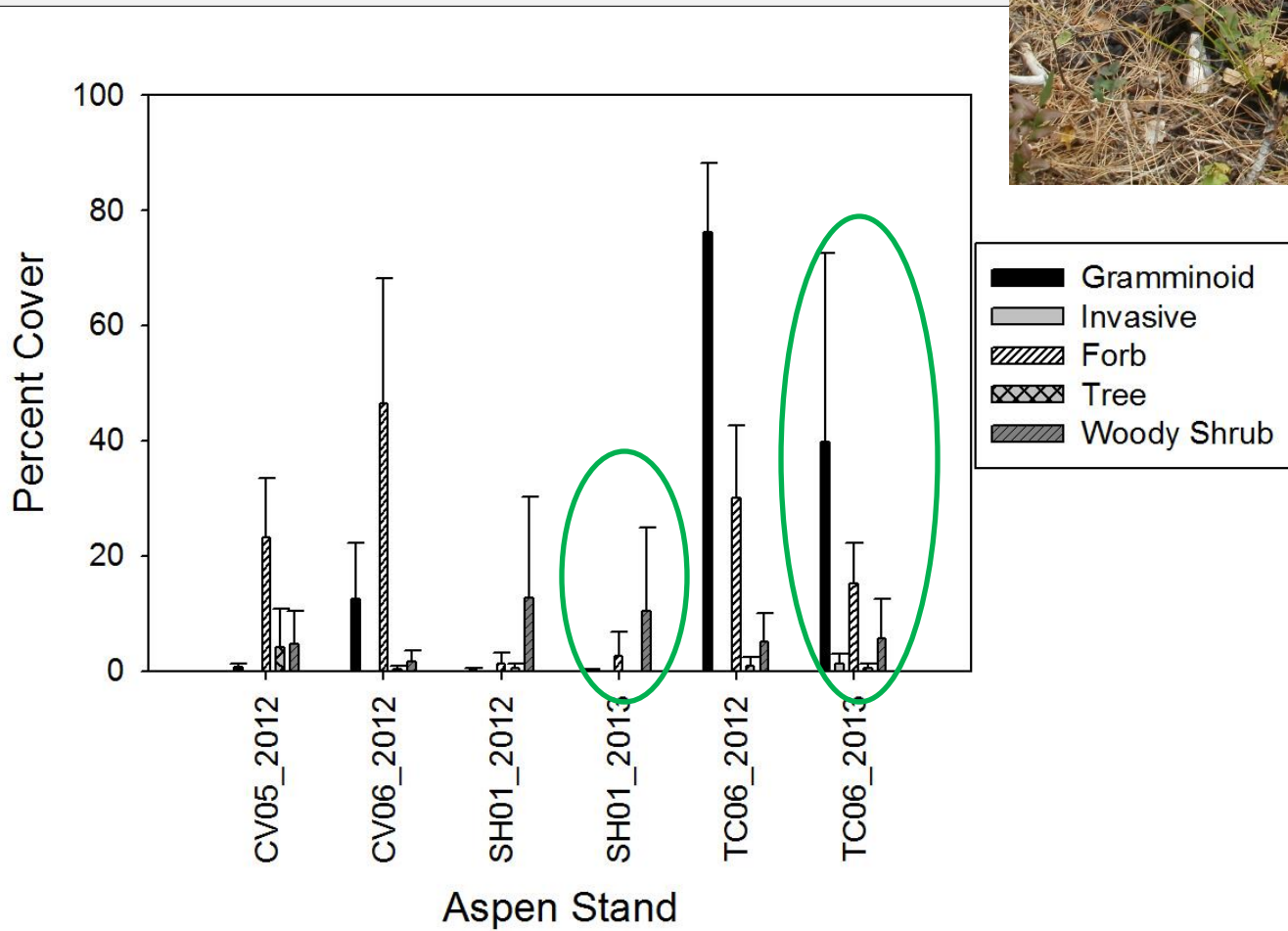


# Fuels loading





# Understory vegetation structure



# Soil



# Questions?

